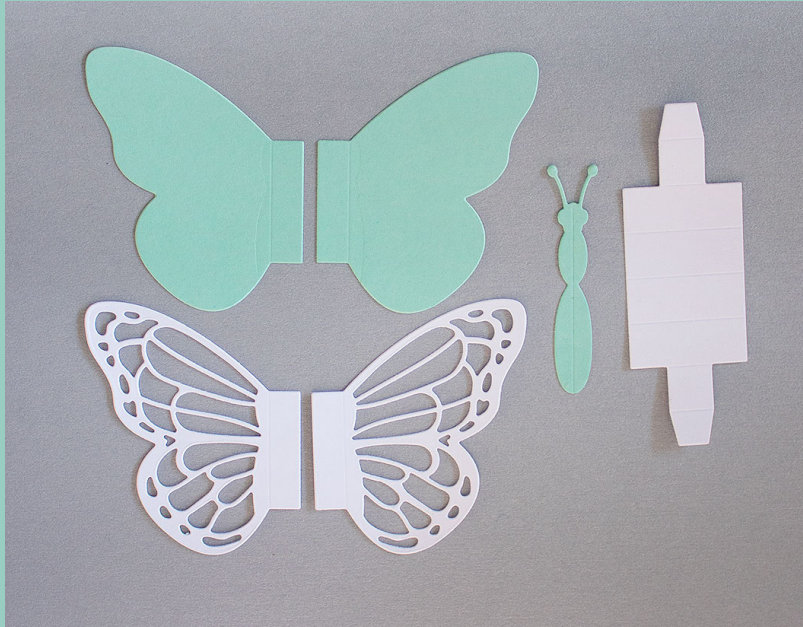




# Pop-Up Butterfly

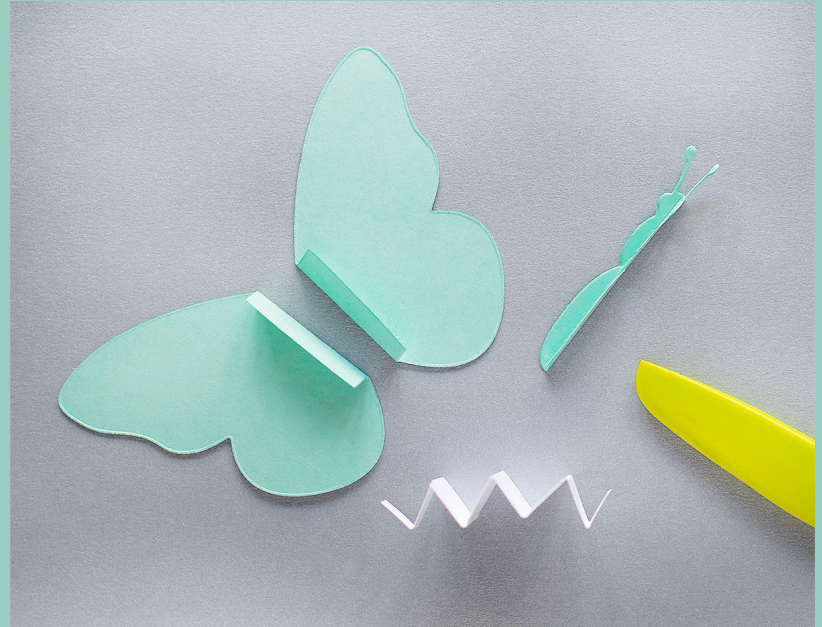
SPELLBINDERS BIBI'S BUTTERFLIES

## STEP 1



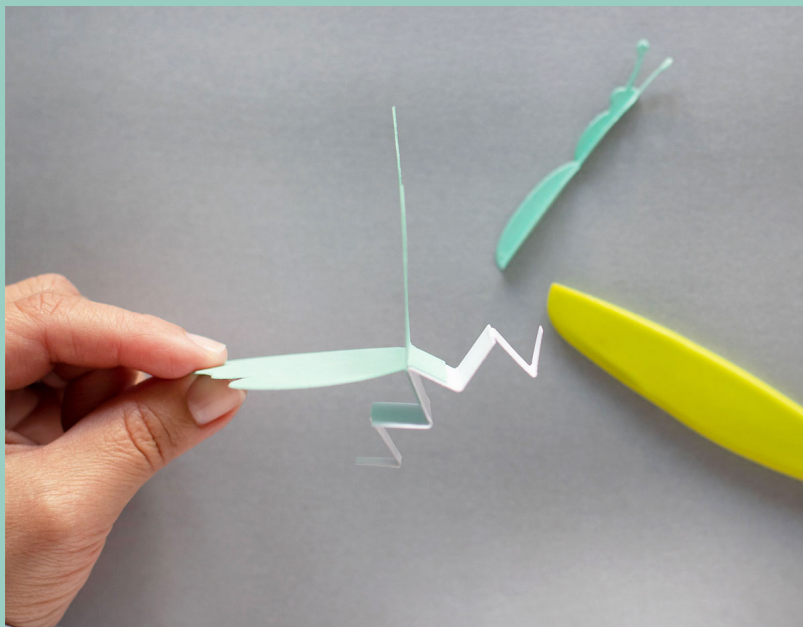
Die-cut the 6 pieces required to assemble the pop-up.

## STEP 2



Fold the scoring lines on each piece as shown in the picture.

## STEP 3

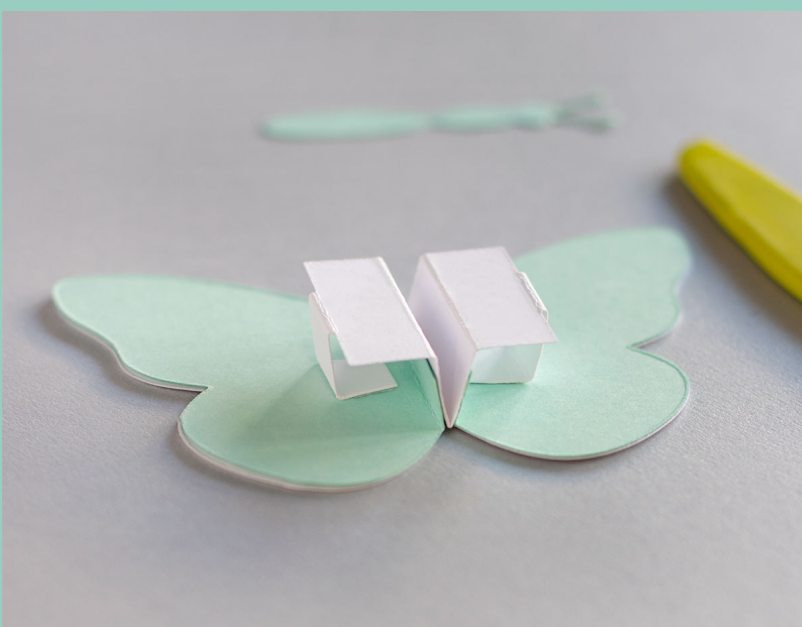


Afixx the butterfly wings to the top fold of the mechanism.

## STEP 4



Glue the mechanism ends folded inwards to the back of the wings.



The pop-up mechanism should look like this!

*Next...*





## STEP 5



Cut the intricate butterfly wings flaps and glue in place.

## STEP 6



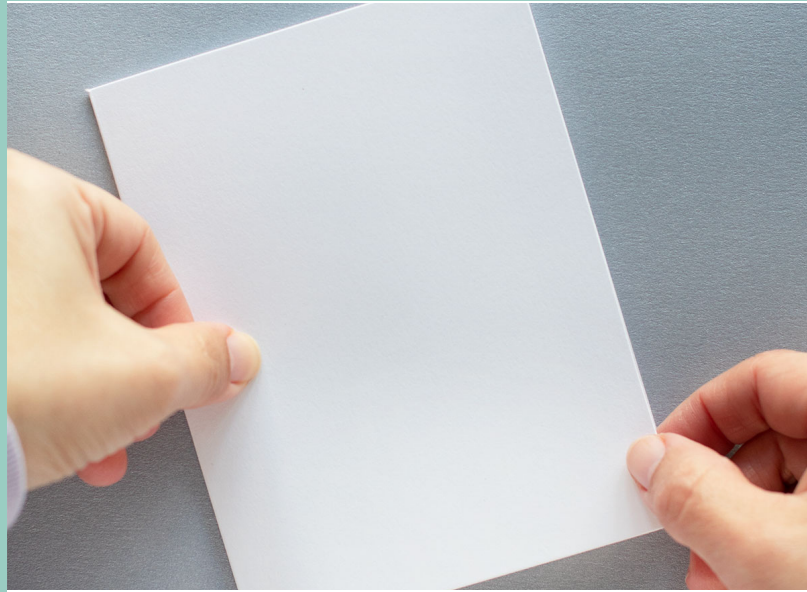
Glue the folded butterfly body on the center of the pop-up.

## STEP 7



Apply adhesive to the pop-up bottom fold. Align it with the score line to adhere it in place.

## STEP 8



Close the card base to affix the other side of the pop-up behind the front panel.

## DONE!



Well Done!  
X Bibi